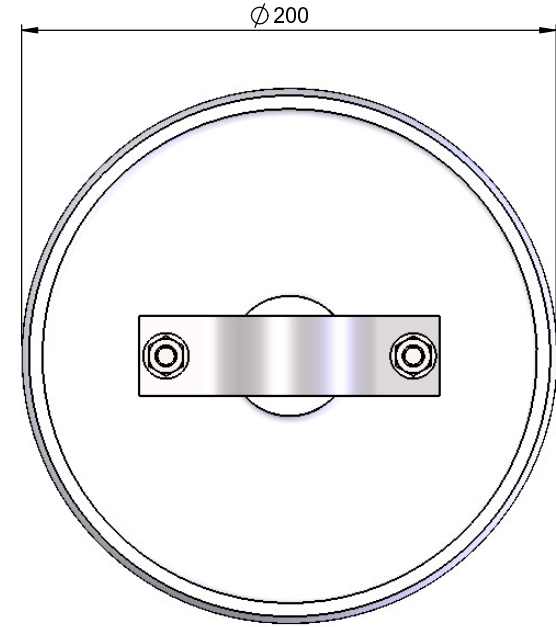
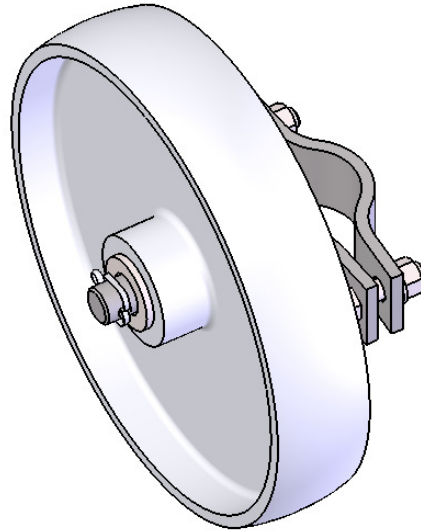
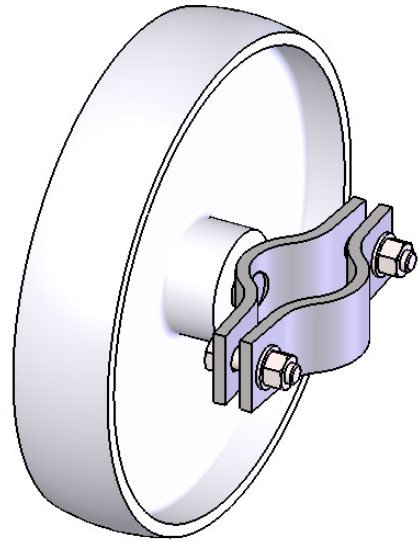


ALL DIMENSIONS IN MILLIMETRES  
REMOVE ALL SHARP EDGES

1046 8  
THIRD ANGLE PROJECTION  
DO NOT SCALE DRAWING



4	18/3/16	ISSUED FOR MANUFACTURE		
3	25/5/15	ISSUED FOR MANUFACTURE		
REV	DATE	DESCRIPTION		

TOLERANCES - UNLESS STATED OTHERWISE		
UNTOLERANCED DIMENSIONS	+/- 2mm	
CUTTING LENGTHS	+/- 2mm	
FABRICATION	UP TO 300mm	+/- 1mm
	UP TO 1000mm	+/- 2mm
	1001mm & ABOVE	+/- 3mm
	ANGULAR	+/- 1°
MACHINING	+/- 0.2mm	
GAUGE	+/- 10%	
WEIGHT	+/- 10% (DUE TO MATERIAL PROPERTIES & TOLERANCES)	

TITLE: <b>CASTOR ASSEMBLY LARGE EURO</b>			
	NAME	SIGNATURE	DATE
DRAWN	G. CRICK		19/12/11
CHK'D			
FINISH: SEE DETAIL SHEETS			

MATERIAL: SEE DETAIL SHEETS		Revision
Drw / Stockcode No. <b>09053025</b>		<b>4</b>

WAS ZND518 & ZNDDE0080  
THE COMPANY RETAIN THE RIGHT TO PERIODICALLY ALTER INFORMATION WITHIN THIS DRAWING SHEET AND WILL ATTEMPT TO NOTIFY ALL PARTIES CONCERNED OF ANY CHANGES AND THE INFORMATION ON THIS SHEET SHOULD NOT BE REPRODUCED WITHOUT THEIR WRITTEN CONSENT.